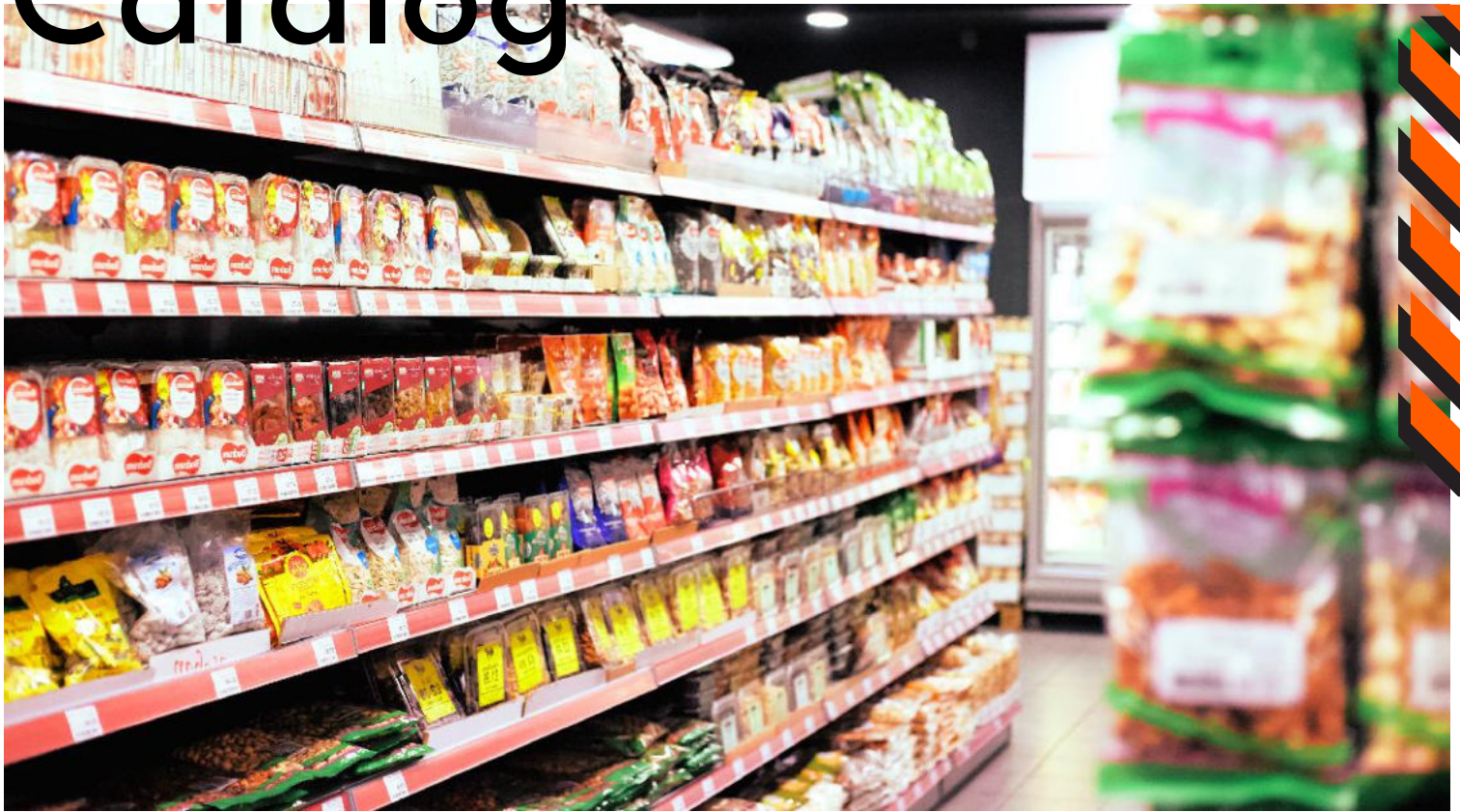


# COMMERCIAL STORAGE SOLUTIONS Catalog



# About Us

---

Vibranic, with 30+ years of global supply chain and procurement experience, excels in Construction & Design Engineering Projects. We offer smart sourcing, strong partnerships, and quality in procurement, design, planning, manufacturing, logistics, and distribution.

We are a one-stop solution for Projects, Builders, Architects, Interior Designers, Distributors, and General Contractors, known for our integrity and efficiency.

## Storage Solutions





**Industrial Shelving** : Our industrial shelving units provide robust storage for warehouses and factories, with adjustable shelves to accommodate various-sized items.



## Best Seller Products

**Modular Cabinets:** Stay organized and clutter-free in your office or workspace with our modular cabinets, available in various configurations to suit your needs.





## American Style Shelf

This American style shelf is a classic fixture for retailers of the American countries because of their strength and durability. Standard loading per shelf can up to 150ksg/layer.



## HBE-NSR-04



Upright height	54"	60"	72"	84"	96"		
Shelf length	36"	42"	48"	54"			
Base shelf depth	12"	14"	16"	18"	20"	22"	24"
Upper shelf depth	54"	54"	54"	54"	20"	22"	24"



HBE-NSR-08



Upright height	1350	1550	1850	2150	2550				
Shelf length	500	650	700	800	900	1000	1100	1200	1300
Base shelf depth	200	300	350	400	450	500	550	600	
Upper shelf depth	200	300	350	400	450	500	550	600	



## Luxury OEM Style Shelf

Luxury OEM style shelf can meet the high requirement of customer who want their store looks high standard, unique and elegant. Using the combined structure of metal and wood can be surely make your store outstanding!



Standard 50mm pitch system, which means compatibility with existing shelving that is used throughout Europe.

## European Style Shelf

With reinforced shelves and sturdy construction, our European style shelf have a high load capacity. And with the superior finish, our retail shelving units are built to withstand the heavy, day-to-day use that commercial shelving requires.



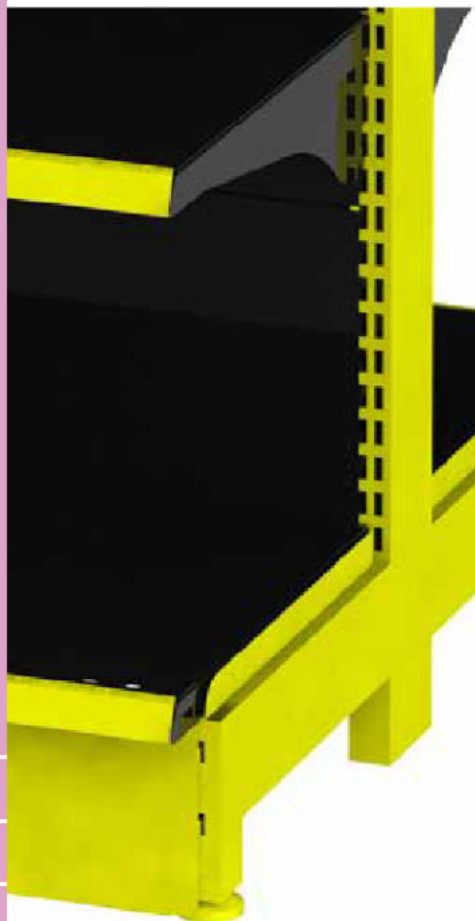
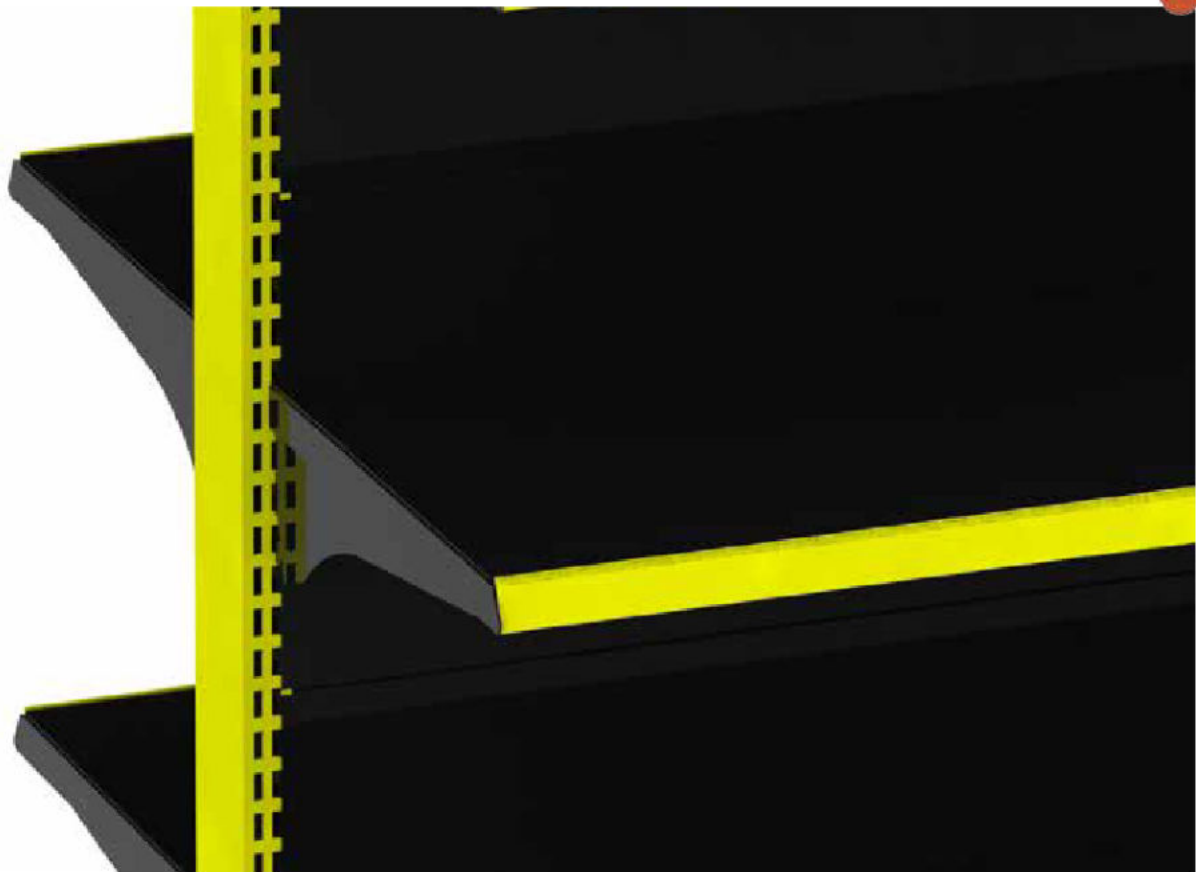


HBE-NSR-01



Upright height	1210	1410	1610	1810	2110	2310	2410	2710
Shelf length	500	665	800	900	1000	1100	1200	1250
Base shelf depth	270	370	470	570				
Upper shelf depth	270	370	470	570				





## Asian Style Shelf

This our standard shelf, come in a variety of widths, to fit your available space, and with various shelving options. All of our units and shelves have a high-quality finish. This ensures a long-lasting product and makes them easy-to-clean for hygiene.



Upright height	1350	1550	1850	2150	2550				
Shelf length	500	650	700	800	900	1000	1100	1200	1300
Base shelf depth	200	300	350	400	450	500	550	600	
Upper shelf depth	200	300	350	400	450	500	550	600	

# Middle East Style Shelf

This retail shelving use the standard 50mm pitch system. The shelves are adjustable both in height and angle to maximise storage and display your products at their best.



Upright height	1308	1508	1608	1808	2208	2408	2508		
Shelf length	500	650	700	800	900	1000	1100	1200	1300
Base shelf depth	200	300	350	400	450	500	550	600	
Upper shelf depth	200	300	350	400	450	500	550	600	

# Best Seller Products





## Outrigger Style Shelf

Outrigger shelving is a great shelving solution for convenience stores right through to full size supermarkets. It has an outrigger post at the front for increase weight capacity, allowing for storage on the top shelf without the worry of overloading.



HBE-NSR-05



Upright height 2100

Shelf length 900

Base shelf depth 450

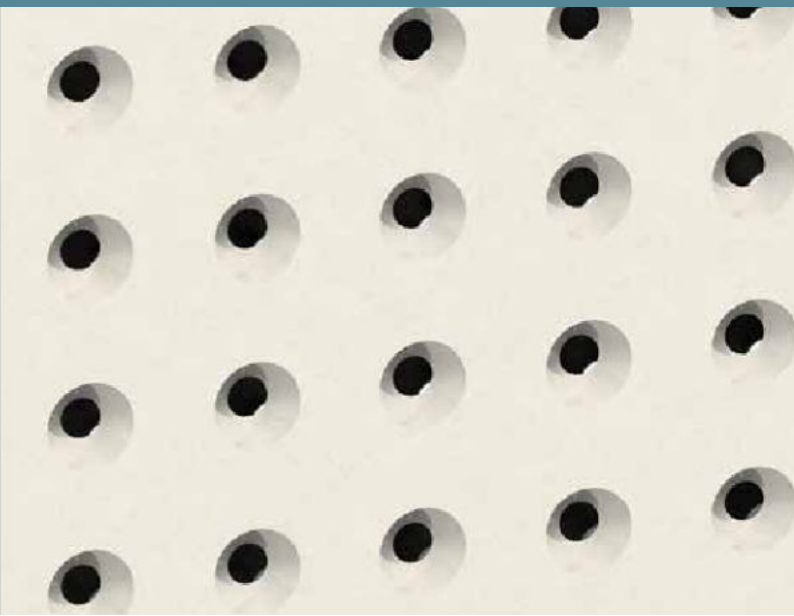
Upper shelf depth 350 400 450



HBE-NSR-06



Upright height	1500	1800	2100	2400
Shelf length	600	900	1200	
Base shelf depth	400	450	500	
Upper shelf depth	350	400	450	



## Australian Style Shelf

This type of shelving is particularly popular in Australian market. With a free standing fixture that can be used to display merchandise. This Gondola shelving can be versatile for displaying a retailer's products, as the shelf levels are fully adjustable and additionally we can provide a large range of fittings to display many specialised products.

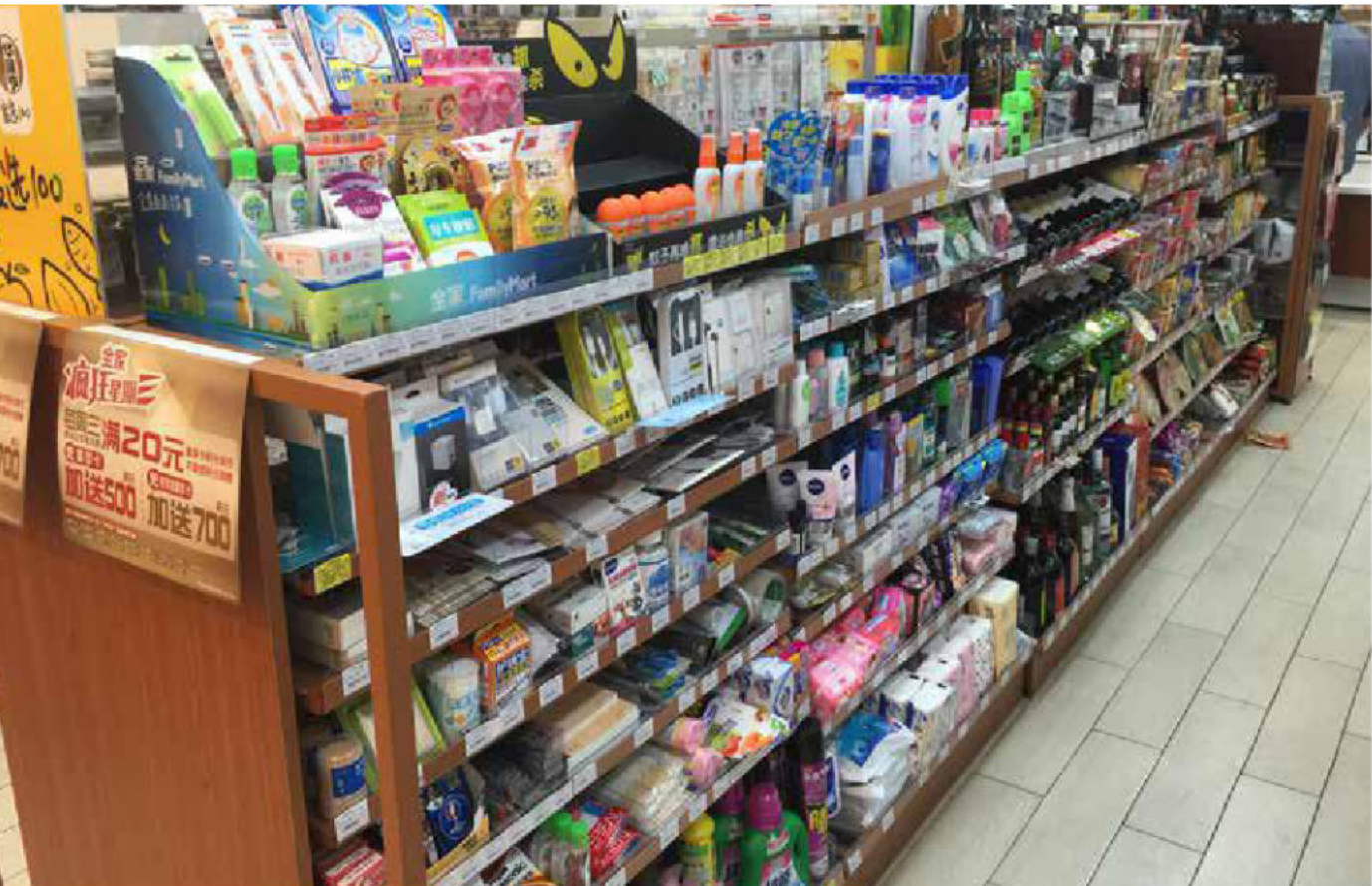


HBE-NSR-07



Upright height	1200	1300	1500	1650	1800
Shelf length	750	900			
Base shelf depth	350	450			
Upper shelf depth	250	300	350		





## Convenience Store Shelf



Fully flexible and suitable for a whole range of retail establishments. The shelving is durable and versatile and can be used for the display of absolutely any product in any retail application. Available in various sizes and configurations to suit your needs.



HBE-NSR-09

# Integrated Rack Shelving



Outside rack size can be customized.

Upright height	1210	1410	1610	1810	2110	2310	2410	2710
Shelf length	500	665	800	900	1000	1100	1200	1250
Base shelf depth	270	370	470	570				
Upper shelf depth	270	370	470	570				



## V E R S A T I L I T Y



## PROFESSIONAL FURNITURE CUSTOM

- **Adjustable Shelves:** Customize the shelf height to accommodate items of varying sizes, maximizing your storage space.
- **Heavy-Duty Construction:** Engineered to withstand the heaviest loads, ensuring durability and longevity.
- **Easy Assembly:** Quick and straightforward installation, getting your storage system up and running in no time.
- **Versatility:** Ideal for storing pallets, bins, tools, and other industrial essentials.
- **High Load Capacity:** These shelving units can support substantial weight, making them perfect for storing heavy items.





# STREAMLINED SOLUTIONS FOR BUSINESS NEEDS



Explore our Commercial Storage Supply Catalog for a range of efficient storage solutions designed to optimize your workspace and enhance organizational capabilities.



# Space Utilization







- **Versatile Merchandising:** Tailor your displays to match your brand's aesthetics and efficiently showcase products.
- **Modularity:** Create customized displays that can adapt to changing merchandise and store layouts.
- **Space Optimization:** Make the most of your available floor space, even in small retail areas.
- **Enhanced Visibility:** Draw attention to featured items, promotions, and new arrivals with eye-catching displays.
- **Durability:** Built to withstand the demands of a retail environment and heavy customer traffic.



Metal hooks for pegboard



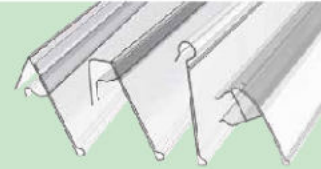
Price-holder with adhesive tape

Metal hooks for slatwall



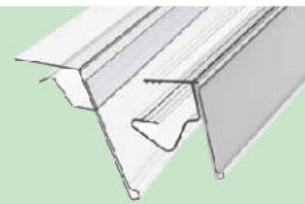
Price-holder for metal shelves

Metal hooks for crossbar



Price-holder for wire shelves and baskets

Metal hooks for gridwall



Price-holder for glass and wood shelves

Other special hooks



Price-holder for hooks







# WAREHOUSE STORAGE SOLUTIONS

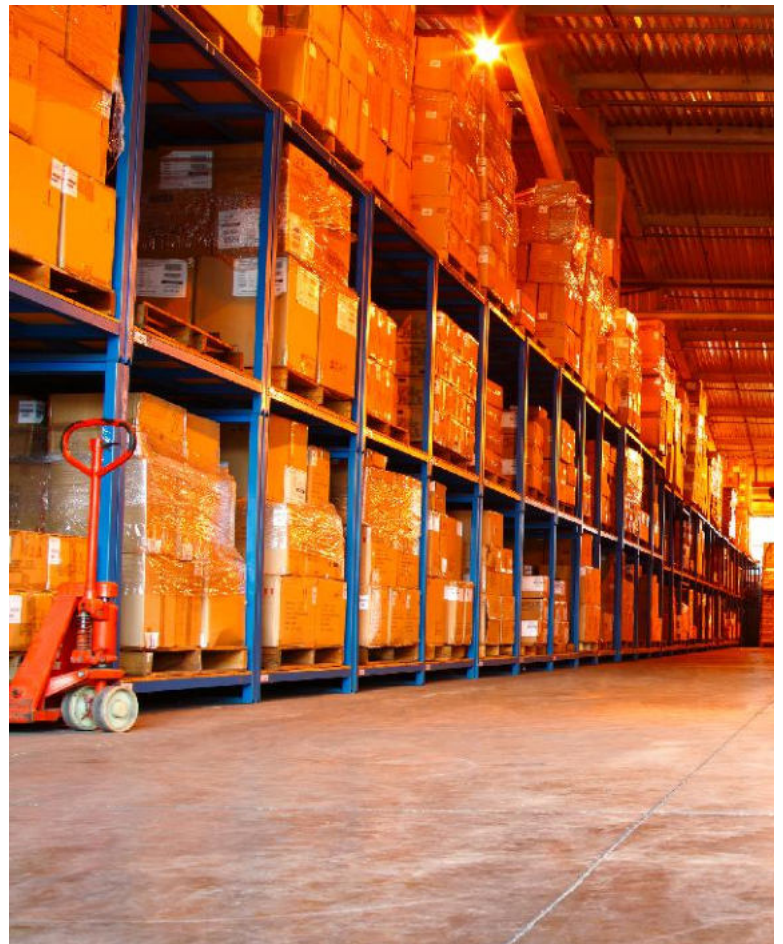
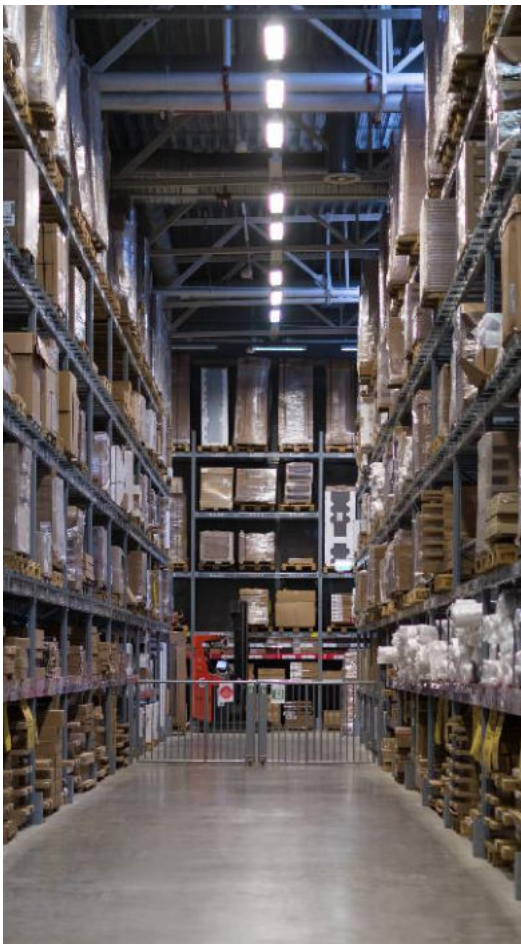
Our industrial shelving systems are the backbone of efficient storage in warehouses, factories, and industrial facilities. Designed for heavy-duty use, these robust shelving units offer a versatile and cost-effective solution for organizing and storing a wide range of products, equipment, and materials.



# Compliance with Regulations

---

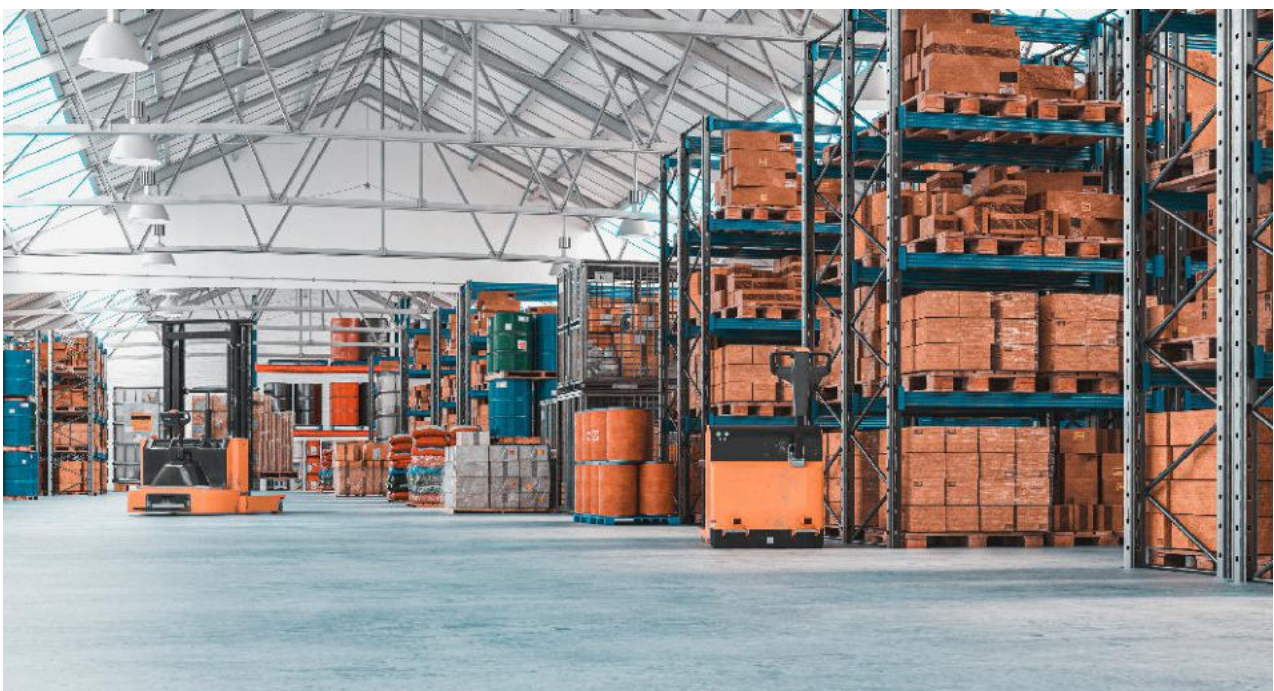
Depending on the industry, some storage systems are designed to meet specific safety and regulatory standards, such as those for hazardous materials or cold storage. Industrial storage systems are built to last, ensuring a long lifespan and a good return on investment. They can be reconfigured or expanded to accommodate changing storage needs as your business evolves.



# Heavy-Duty Construction

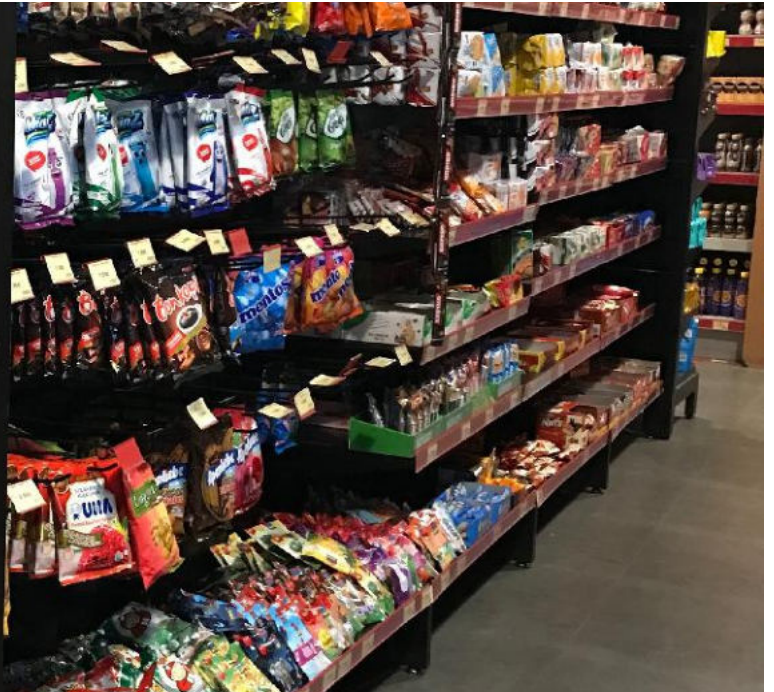
Industrial storage systems are built to withstand heavy loads, ensuring they can handle the weight of materials, equipment, and products commonly found in industrial settings.

The ability to adjust shelf or rack heights allows for flexible storage configurations, accommodating items of various sizes and shapes.





“Our vision is to simplify building material sourcing and pricing by eliminating channels and integrating Procurement, Logistics and Distribution services.”



For More Information, Designs & Customization Please Contact Us.



# Vibranic

— YOUR GLOBAL PARTNER —

**Vibranic Global Inc.**  
**300 Carnegie Drive, Suite #150 Princeton, NJ 08540**  
**Ph.no. +1-866-212-3111**  
**Email: [usa@vibranic.com](mailto:usa@vibranic.com) Web: [www.vibranic.com](http://www.vibranic.com)**

